

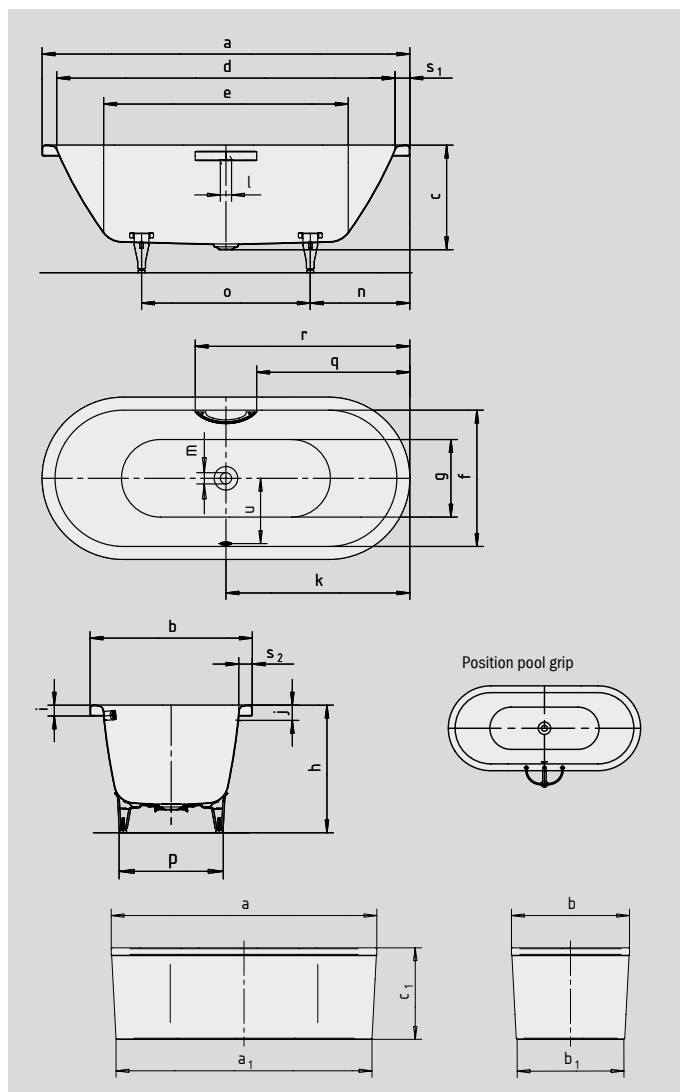
CENTRO DUO OVAL WITH MOULDED PANEL

- pure simplicity and unpretentious elegance are what distinguish these baths
- bathing with a friend: two identical back rests and centrally positioned waste
- made of KALDEWEI steel enamel
- the moulded panel emphasizes the high design standard and means the bath can be free-standing
- enamelled waste cover and overflow knob integrated in the bath design



Similar illustration

To order the bath with pre-drilled grip holes on one side, please order model xxxx**1011**xxxx.



GRIP DISCREET OPULENCE



| Model No. | | 127-7 | 128-7 |
|---|---------------------------------|-------------|----------------|
| External length | a | 1700 | 1800 mm |
| External length (bottom) | a ₁ | 1635 | 1735 mm |
| External width | b | 750 | 800 mm |
| External width (bottom) | b ₁ | 685 | 735 mm |
| Depth | c | 485 | 485 mm |
| Overall height with panel | c ₁ | 620 | 620 mm |
| Internal length (top) | d | 1580 | 1680 mm |
| Internal length (bottom) | e | 1130 | 1230 mm |
| Internal width (top) | f | 630 | 680 mm |
| Internal width (bottom) | g | 510 | 560 mm |
| Height with feet | h | 605-640 | 595-630 mm |
| Height of rim | i | 50 | 50 mm |
| Distance top edge to centre of overflow hole | j | 70 | 70 mm |
| Distance bath edge to centre of drain hole | k | 850 | 900 mm |
| Diameter of overflow hole | l | 52 | 52 mm |
| Diameter of drain hole | m | 52 | 52 mm |
| Distance foot end of bath edge to centre of foot | n | 560 | 600 mm |
| Distance between the feet | o | 580 | 600 mm |
| Max. width of feet | p | 465 | 540 mm |
| Distance bath edge (foot end) to where grip/handle starts | q | 708 | 758 mm |
| Distance bath edge (foot end) to where grip/handle ends | r | 992 | 1042 mm |
| Width of rim (foot end; lengthwise) | s ₁ ; s ₂ | 60; 60 | 60; 60 mm |
| Distance between centre holes | u | 307 | 332 mm |
| Water volume** in litres | | 156 | 195 |
| Weight of the enamelled bath in kg | | 86 | 95 |
| Anti-slip | | ∅ 435 | ∅ 435 mm |
| Full anti-slip | | 900 x 300 | 900 x 300 mm |

Note: The operational system may protrude on some whirl systems. Please refer to the Technical Information for Whirl Systems for further information. Subject to technical alterations, tolerances and errors. Similar illustration. ** 70 litres displacement on average.